



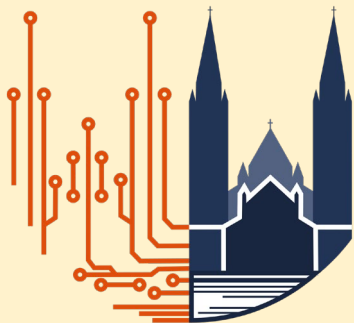
# Stoptábla és jelzőszalag

Hallgatók támogatása MI-tájékoztatással

KIT- Szakmai Műhely

MAGYAR KÖNYVTÁROSOK EGYESÜLETE

**55. VÁNDORGYŰLÉSE**



A változás részesei vagyunk: Mi és MI

**2024. JÚLIUS 17-20.**

**SZEGED**

Dr. Hajnal Ward Judit  
Rutgers Egyetem, New Jersey, USA

# Az elefánt a könyvtárban . . .



*Kép: Mesterséges intelligencia (Canva Magic Media) alkalmazásával készült*



ISSN: 1043-2094

VOLUME 36, NUMBER 3

JUNE 2024

# Against the Grain

"Linking Publishers, Vendors and Librarians"

## AI in Libraries

Guest Edited by Vessela Ensberg  
(Associate Director, Data Architecture, UC Davis Library)  
and Peter Brantley  
(Director, Online Strategy, UC Davis Library)

Begins on Page 12

**WHAT TO LOOK FOR IN THIS ISSUE:**  
...but this is wondrous strange  
(Shaw, *Art 1, Stone 3, the 1711*, 12)  
An Interview with Cary Price... 15  
Generative AI for Scholarly Information Access... 19  
Libraries, AI and Training Collections... 22

### If Rumors Were Horses

Happy summer! The first day of summer is here! June in SC is hot, hot, hot, and the beaches are crowded, crowded, crowded. The Charleston area (Folly Beach, Isle of Palms, Sullivan's Island, and Kiawah Island) has been a popular vacation destination for years but it's getting more and more congested. Here's a fun guide to enjoying your summer in the Lowcountry from the Charleston City Paper. Where do you like to go to visit the beach? Or are you more of a mountain type person? Either way, hope you get a chance to enjoy your favorite places this summer. We have a lot of rumors so let's get cracking!

**Conferences and Events**

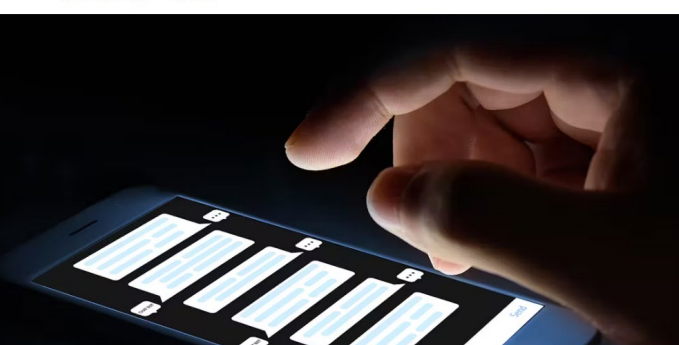
Did you attend the SSP 2024 Annual Meeting? It was held May 29-31 in the district of Boston. Leah Hinds, our Executive Director, and Doe Hawkins, our Commerce Blogger, were both there and report strong attendance and high energy and engagement with a strong program. Leah presented alongside Lisa Parisek Hinchliffe (University of Illinois) continued on page 8

ARTIFICIAL INTELLIGENCE

### Latest AI Announcements Mean Another Big Adjustment for Educators

New features of ChatGPT and other tools may mean teachers will need to change how they lecture, as well as further rethink homework.

By Jeffrey R. Young Jun 6, 2024



Journal of the European Association  
Health Information and Libraries

Vol. 20 No. 2 June 2024

**CONTENTS**

**EDITORIAL**  
*Michelle Wake*

**MONOGRAPHIC SECTION**  
Artificial intelligence and libraries  
*Edited by Michelle Wake*

**Feature Articles**  
Mobilising our skills and values for the data centric world of artificial intelligence  
*A. Cox*



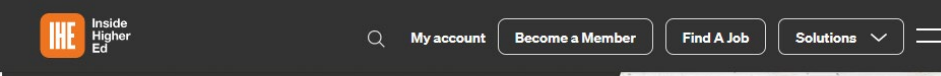
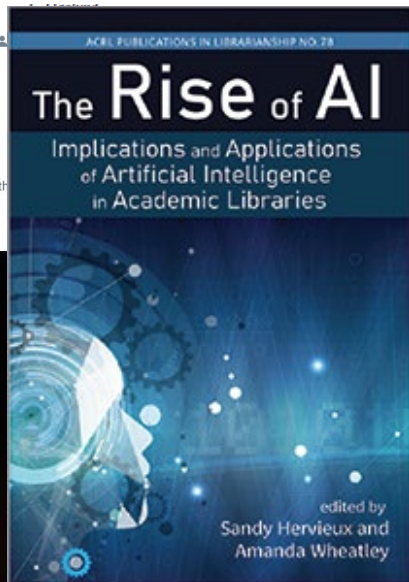
## How AI Is Forging Connections Across Campus for a Seamless Student Experience

June 20, 2024

Moderated by:  
**Rhea Kelly**  
Editor in Chief  
Campus Technology

Sponsored by:  
**ocelot™**

People, Library and Company Profiles... 66  
Plus more... See inside



May 01, 2024

## New AI Guidelines Aim to Help Research Libraries

The new list of seven principles support librarians increasingly bombarded with questions about artificial intelligence.

By Lauren Coffey

Researchers are using AI despite not trusting the companies behind the technology, according to a new report.

Getty Images

Advertisement

ASSOCIATION OF RESEARCH LIBRARIES

# ARL Views

Home / Blog / Research Libraries Prepare for a World of AI-Influenced Research and Scholarship

## Research Libraries Prepare for a World of AI-Influenced Research and Scholarship

by Judy Ruttenberg | May 23, 2024

Last Updated on June 14, 2024, 12:13 pm ET

Home > Vol 85, No 5 (2024) > Lo

## Evaluating AI Literacy in Academic Libraries: A Survey Study with a Focus on U.S. Employees

Leo S. Lo

This survey investigates artificial intelligence (AI) literacy among academic library employees, predominantly in the United States, with a total of 760 respondents. The findings reveal a modest self-rated understanding of AI concepts, limited hands-on experience with AI tools, and notable gaps in discussing ethical implications and collaborating on AI projects. Despite recognizing the benefits, readiness for implementation appears low among participants. Respondents emphasize the need for comprehensive training and the establishment of ethical guidelines. The study proposes a framework defining core components of AI literacy tailored for libraries. The results offer insights to guide professional development and policy formulation as libraries increasingly integrate AI into their services and operations.

ABOUT THE  
Leo S. Lo is I of University Learning Sci University of email: leo\_s.lo@u...

ARTICLE TO  
Print t  
Index  
How to



# Valóság és az MI



Fotó: Hajnal Ward Judit



Fotók: MI felhasználásával (ai-suit-up)

# Ken Lee!! Tulibu Dibu Douchoo!!!



Fotó: YouTube

60%

- **MI** – a nagyokos papagáj?
  - Az intelligens MI hallucinál
  - Hivatkozik nem létező tanulmányokra
  - ...
- + **Valós MI-kritika**
  - Hitelesség
  - Fenntarthatóság
  - DEI: diversity, equity, inclusion
  - Hozáférhetőség: nyelv, \$\$\$
  - ...



# SOS!! MI-segítség a hallgatóknak

Alapképzés  
(4 éves, BA,  
BSc, stb)

Diploma függ  
tőle

Kell a jó jegy  
(\$, Honors  
College, PhD)

Első generációs  
egyetemista

Külföldi  
diák

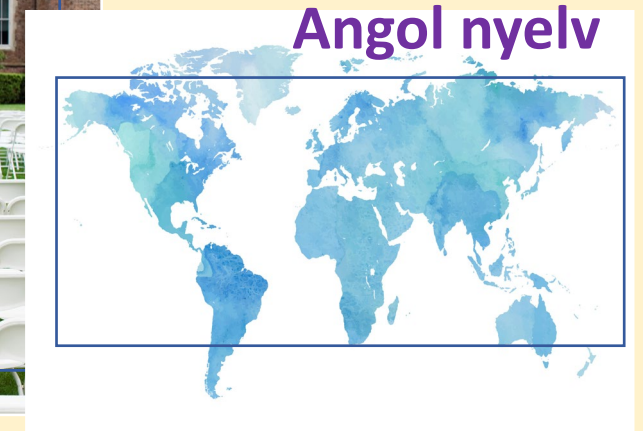
Mester szak,  
doktori iskola

1 órán belül  
be kell adni

Kötelező /  
választható  
tantárgy

Angol nem az  
anyanyelve (USA)

# Hallgatók a valóságban (USA)



Nem  
hagyományos

# MI és a hallgatók

1. Adatelemzés
2. Prediktív modellek
3. Kísérlet tervezés
4. Irodalomkutatás
5. Képfeldolgozás
6. Szimuláció
7. Automatizálás
8. Hipotézis generálás
9. Természetes nyelvfeldolgozás
10. Interdiszciplináris kapcsolatok

# AI and students

1. Data analysis
2. Literature review
3. Hypothesis generation
4. Experimental design
5. Simulation and modeling
6. Image and signal processing
7. Natural language processing
8. Robotics
9. Drug discovery
10. Peer review

Háttér: ©Melissa Katko Pepin, 2001  
Engedéllyel használva



# MI-lehetőségek a kutatási folyamatban

Szemantikus  
keresés

Szövegírás,  
szerkesztés

Kutatás-  
támogatási  
pályázat  
írása

Kutatási  
trendek  
elemzése

Adat-  
elemzés

Szakirodalom  
áttekintése

Adat-  
vizualizáció

Kísérlet  
tervezése

Szimuláció  
Modellezés

Hipotézis  
finomítása

Testre szabott  
javaslatok: cikkek,  
szerzők, bírálók

Folyóirat-  
választás

# Szövegszerkesztés MI-segítséggel ≠ Írás

MI ✓

- ❑ Ötletgyűjtés a tartalomhoz: vázlatírás
- ❑ Piszkozat készítése
- ❑ Egyes részletek (előszó, irodalmi áttekintés, módszerek)
- ❑ Apró javítások: elütés, egyeztetés, igeidő, szórend, központosítás, stb
- ❑ Következetesség (terminológia, stílus, hangnem)
- ❑ Plagizálás ellenőrzése
- ❑ Hivatkozások formázása

Selecting a Journal for Publication  
PAS PhD Summer School, 2024

Judit H. Ward  
judit.ward@rutgers.edu

## RECOMMENDED BOOK

Babor, T. (2017). *Publishing Addiction Science: a guide for the perplexed* (T. Babor, Ed.; Third edition.). Ubiquity Press. <https://doi.org/10.5334/bbd>

### ASSESSMENT EXERCISE

1. Journal of Addiction <https://www.hindawi.com/journals/>
2. Journal of Addiction Research <https://www.opastpublishing.com/journals/addiction-research>
3. Journal of Alcoholism, Drug Abuse and Substance Dependence <https://www.heraldopenaccess.us/journals/journal-of-alcoholism-and-substance-dependence>
4. Global Conference on Addiction Medicine, Behavioral Health and Substance Use, 2023, Baltimore, MD, USA and virtually <https://magnusconference.com/>

### REFERENCES

Babor, T. F., & Ward, J. H. (2018). *Caveat Emptor: Predatory Publishing and the Potential Corruption of Addiction Science*. *Journal of Studies on Alcohol and Tobacco Use* (Study on addiction journals – Open Access)

Lafollette, M. C. (1992). *Stealing into print: Fraud, plagiarism and misappropriation*. Berkeley CA: University of California Press.

### USEFUL WEB SITES

Altmetrics	<a href="https://altmetric.com">https://altmetric.com</a>
SCIMAGO	<a href="http://www.scimagojr.com">http://www.scimagojr.com</a>
CRAAP test (evaluation)	<a href="http://www.csuchico.edu/~lib/craap/">http://www.csuchico.edu/~lib/craap/</a>
Purdue OWL (citations)	<a href="https://owl.purdue.edu/owl/reference/citations.html">https://owl.purdue.edu/owl/reference/citations.html</a>
Predatory Journals	<a href="https://predatoryjournals.org/">https://predatoryjournals.org/</a>

Correctness - Add a comma  
...plagiarism, and misconduct...  
Accept Dismiss ...

- Uses • Correct subject-verb...
- Factor • Add a period
- other • Correct word choice
- resources, • Remove the comma
- aims • Correct subject-verb...
- a • Add a comma

Correctness Clarity Engagement Delivery

Page 1 of 3 477 words English (United States) Text Predictions: On

Grammarly (\$\$\$): correctness, clarity, engagement, & delivery

Home

Library

Notebook

Profile

Citation booster

Literature Review

Copilot

Citation generator

Paraphraser

**AI Detector**

Chrome Extension

Talk with us

Use on ChatGPT

# Academic AI Detector

Catch GPT-4, ChatGPT, Jasper, and other AI writers' presence in scholarly content.

PDF

PT Quillbot Jasper AI + Human text Abstract by AI

My Text Scans

now (and not tell!) the hopes and dreams of three sisters. Growing up in the big city, Olga, Marina long for going back, back to happiness, as they sorely miss the sophistication and city life in their miserable, provincial existence crippled with desperation. However, their turn into resignation and toleration of their situation, adding a masterpiece to the classic of three siblings, seemingly alike, but utterly different.

Historical fiction published by New Zealand novelist Heather Morris tells the story of different from another time, the Holocaust. The story of three Slovakian sisters: Magda, Livia, and more desperate times, during the Nazi occupation of East Europe in the middle of the 20th the concentration camp Birkenau (a few miles from Auschwitz, Oświęcim in Polish) as its these vulnerable but strong young women support one another through hard labor, starvation, eventually managing to escape the final annihilation: the destruction of the camp before arrive.

What united them for life is lasting and not to be forgotten. Their story continues as they settle el, get on with their lives, marry, and have children and grandchildren, just like everyone else But can they? Even with their resilience and all the love surrounding them, can they really Now can anyone surviving severe trauma go on living like everyone else around them? What

182/1500 words

Scientific

Non Scientific

Reanalyse



## AI detection report

9%

Essentially Human

The text is written almost entirely by a human

5 out of 56 sentences were AI written.

### AI USAGE PROBABILITY

High AI

Moderate AI

1 sentence

Low AI

4 sentences

MI szűrő!

# Plágium- szűrő!



Kép: ©*Journal of Studies on Alcohol of Drugs (JSAD)*. Engedéllyel használva.

iThenticate Document Viewer — Mozilla Firefox  
https://api.ithenticate.com/en\_us/dv/20220511?lang=en\_us&o=105667417  
16-Jan-2024 10:34AM 5884 words • 57 matches • 24 sources

**iThenticate** JSAD-D-23-00353.pdf BY JUDIT WARD  
Quotes Excluded Bibliography Excluded **13% SIMILAR**

When the CAS Library was closed and its special collections relegated to an offsite facility in 2016, part of an alarming trend of addiction library dissolutions (Mitchell et al., 2012), an ongoing <sup>1</sup>large-scale archival digitization project was suspended, leaving no access to materials already digitized. The Digital Alcohol Studies Archives has saved crucial parts of this collection documenting the foundation of modern alcohol science and made them accessible for the public as well as the scientific community.

<sup>1</sup>Structure of the Digital Alcohol Studies Archives

Internet sites.rutgers.edu Full Source View  
77, 375–383. doi:10.15288/jsad.2016.77.375 Download the full newsletter . Recent Posts The Digital Alcohol Studies Archives: The Instructor's Perspective Scattered Resources Coming Together The Digital Alcohol Studies Archives: Notes from the Digital Data Curator The Digital Alcohol Studies Archives: From Researcher to Editor In the Works: Digital Alcohol Studies Archives Blog Archives Blog Archives Select Month December 2021 February 2021 November 2020 December 2019 September 2018 Mar

Listed on the Rutgers Digital Collections portal, the Digital Alcohol Studies Archives Collection features its own landing page on the RUL website (Rutgers University Libraries, 2023a) as the

### Match Overview

Match 12 of 15

1	Internet 206 words crawled on 24-Mar-2023 sites.rutgers.edu	4%
2	Internet 91 words crawled on 08-Aug-2022 rucore.libraries.rutgers.edu	2%
3	Internet 82 words www.rci.rutgers.edu	2%
4	Internet 43 words crawled on 19-Jul-2022 blogs.libraries.rutgers.edu	1%
5	Internet 42 words crawled on 17-Mar-2021 librarycatalog.ecu.edu	1%
6	Internet 27 words crawled on 05-Feb-2017 library.alcoholstudies.rutgers.edu	1%
7	Internet 24 words crawled on 05-Jan-2024 oup.silverchair-cdn.com	<1%
8	Internet 23 words crawled on 28-May-2009 www.sare.org	<1%
9	Crossref 21 words Nicholas Allred, William Bejarano, Judit H. Ward. "A Sociologist and the Problems of Alcohol Studies: The Life & ...	<1%

# Valós MI-használat a kutatási folyamatban

## Irodalmi összefoglaló

MI-alapú keresőmotorok adatbázisokban vagy MI-szoftverben (béta-változatban vagy \$\$\$)

- Cikkek értelmezése, összefoglalása, elemzése
- Fő eredmények kivonatolása, módszerek összevetése
- A szakirodalom hiányosságainak feltérképezése

## MI Peer Review & Feedback

- Szimulálja a szakmai bírálatot a tanulmány értékei alapján: újszerűség, szakmai jelentőség, lehetséges khatások
- Szakértőket és bírálókat javasol – publikációikat összevetve a cikkel

## Folyóiratközlési javaslatok

- A kész tanulmány témáját, módszertanát és eredményeit összeveti lehetséges folyóiratokkal a korábban ott közöltek alapján

**Működik?**

Journal Article | DOI

# The Journal of Studies on Alcohol and Drugs and the Rutgers Center of Alcohol Studies: A History of the Evolution of Alcohol Research

Paul Candon, +2 more - Vol. 47, pp 8-17

4 Citations Save

**TL;DR:** The Journal of Studies on Alcohol and Drugs (JSAOD) as mentioned in this paper was founded as the Quarterly Journal of Alcohol and Drug Studies (QoSOD) in 1940 by Howard W Haggard, MD, who was the first editor of the journal.

**Abstract:** This article reviews the history of the Journal of Studies on Alcohol and Drugs as well as the Rutgers Center of Alcohol Studies Each has its roots in the Yale Laboratory of Applied Physiology and the era shortly after the repeal of National Prohibition in the United States The journal was founded as the Quarterly Journal of Studies on Alcohol in 1940 by Howard W Haggard, MD, director of the Yale Laboratory of Physiology Alcohol, although not originally the sole focus of the laboratory, eventually became the main and then only focus A Section of Alcohol Studies and later Center of Alcohol Studies formally became components of the laboratory The faculty grew to include notable figures : read more

Chat with Paper: Save time, read 10X faster with AI

Explain Abstract of this paper in 2 lines

Conclusions from the paper

Results of the paper

Methods used in this paper

Summarise introduction of this paper

What are the contributions of this paper

Show more questions



Explain the practical implications of this paper

5:38 PM

## Practical Implications of the Paper:

- Understanding the historical evolution of alcohol research through the Journal of Studies on Alcohol and Drugs and the Rutgers Center of Alcohol Studies can provide insights into the development of multidisciplinary approaches to alcohol-related issues [1].
- Researchers and practitioners in the field of alcohol research and treatment can benefit from learning about the influential figures like Elvin Morton Jellinek and Mark Sobell who played key roles in establishing scientific methodologies for addressing alcohol problems [1].
- The establishment of the first alcohol education program at the Yale Laboratory of Applied Physiology in 1943 highlights the importance of educational initiatives in addressing alcohol-related issues and can guide the development of effective alcohol education programs today [1].
- The relocation of the Rutgers Center of Alcohol Studies to Rutgers University in 1962 signified the importance of institutional support and collaboration in advancing alcohol research, emphasizing the need for academic partnerships in addressing substance use concerns [1].
- The name changes of the journal over the years, culminating in the focus on drugs beyond alcohol, reflect the shifting landscape of substance use research, indicating the need for a broader perspective when addressing substance use disorders in contemporary society [1].

## Future Works Suggested in the Paper:

- Further research could explore the impact of modern advancements in technology and neuroscience on alcohol research, building upon the historical foundation laid out by the Journal of Studies on Alcohol and Drugs and the Rutgers Center of Alcohol Studies [1].
- Investigating the effectiveness of current alcohol education programs in light of the historical development of such initiatives at the Yale Laboratory of Applied Physiology could provide valuable insights for improving alcohol education strategies [1].
- Examining the evolving trends in substance use research beyond alcohol, as indicated by the name changes of the journal, could guide future studies on comprehensive approaches to addressing various substance use disorders [1].
- Exploring the role of interdisciplinary collaboration in alcohol research, as exemplified by the faculty growth at the Center of Alcohol Studies, could inform strategies for fostering multidisciplinary approaches in contemporary substance use research [1].
- Assessing the impact of institutional support and partnerships on the advancement of alcohol studies, particularly in the context of the Rutgers Center of Alcohol Studies, may offer valuable lessons for enhancing research collaborations in the field of substance use [1].

# Reklám a cikknek?



Ki is a szerző?



TikTok videó?????

SCISPAC E Search or ask a question Pricing

## The Journal of Studies on Alcohol and Drugs and the Rutgers Center of Alcohol Studies: A History of the Evolution of Alcohol Research

Judit H. Ward

Abstract  
A T 2 P.M. ON TUESDAY, FEBRUARY 20, 1940, a group of men from Yale University sat in the law offices of Wiggin and Dana at 205 Church Street, in New Haven, CT. There, they met to adopt the bylaws of a corporation formed earlier read more

TABLE 1. J... TABLE 2. D... FIGURE 1. ... FIGURE 5. ... FIGURE 2. I... FIGURE 6. ...

Assets Analytics PDF

### Research Assets

Video 0 Views Slides 0 Views

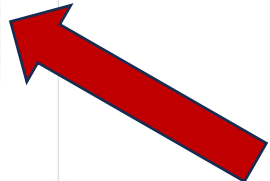
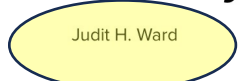
SCISPAC E

Twitter Facebook LinkedIn Copy Link

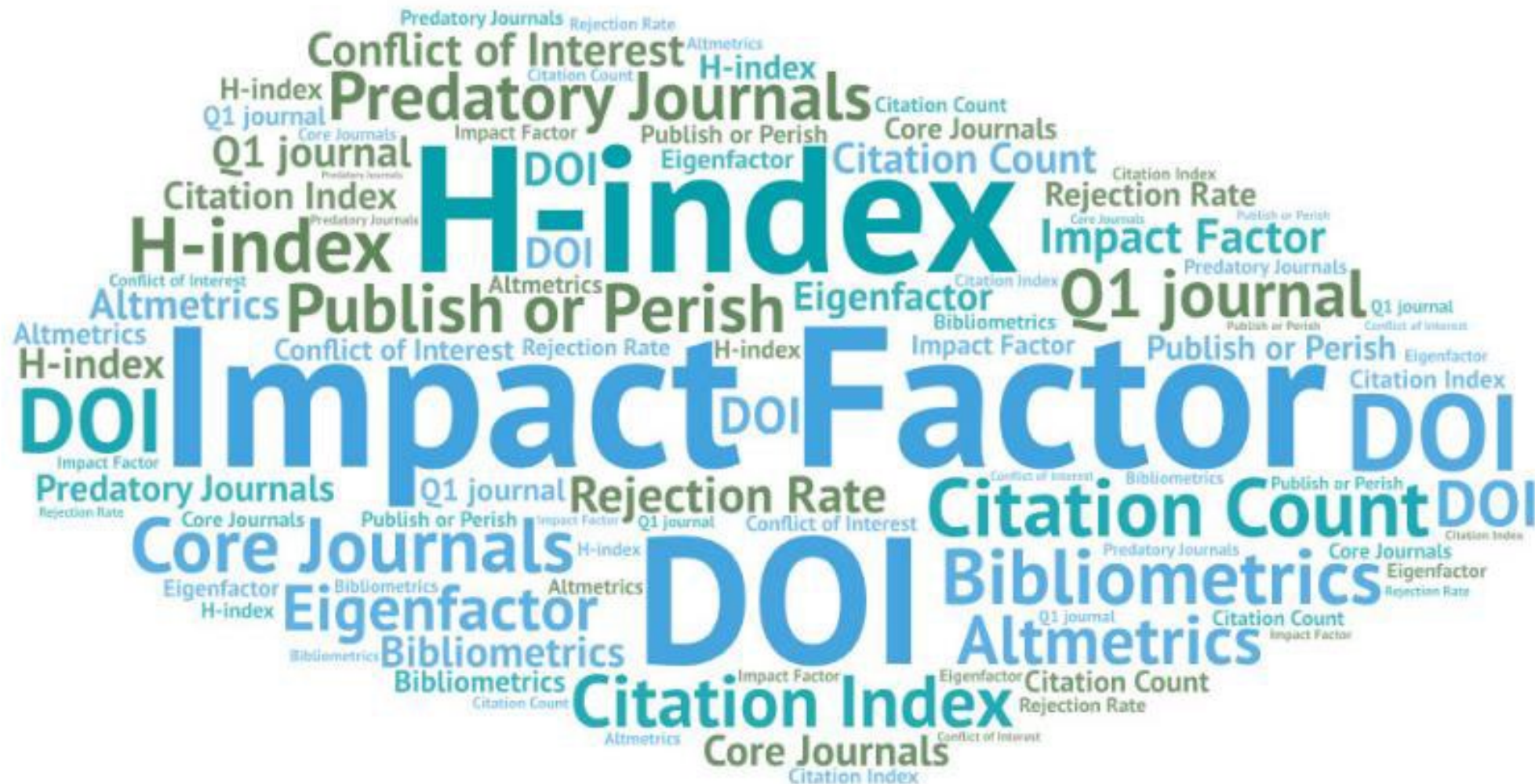
## The Journal of Studies on Alcohol and Drugs and the Rutgers Center of Alcohol Studies: A History of the Evolution of Alcohol Research

The paper presents the history of the journal established to promote education and science through research on alcohol's effects.

SCISPAC E



# Nyelvi szempontú problémáink . . .





# Könyvtáros mint *jelzőszalag*

Rutgers University / [Research Guides](#) / [Artificial Intelligence \(AI\)](#) / Introduction

## Artificial Intelligence (AI)

An introduction to generative AI and its use in teaching, research, and publishing.

Search this Guide  Search

- Introduction
  - AI Defined
  - Limitations of AI
  - Frequently Asked Questions
- Types of Generative AI**
- AI Prompt Writing
- AI in Teaching
- AI in Research
- AI in Publishing
- Further Reading


### AI at Rutgers

- [OTEAR: Artificial Intelligence in Higher Education](#)  
A collection of resources on AI compiled by the Office of Teaching Evaluation and Assessment Research (OTEAR).
- [Critical AI](#)  
An interdisciplinary initiative organized by the Center for Cultural Analysis and the Rutgers Center for Cognitive Science.

### AI Defined

**Artificial intelligence (AI)** refers to the capacity of computers or other machines to perform tasks that typically require human intelligence such as reasoning, problem-solving, and decision-making. AI systems use algorithms and computational techniques to process large volumes of data, extract patterns, and make predictions or decisions based on those patterns.

**Generative artificial intelligence** is a specific subset of AI focused on creating content such as text, images, video, music, and other outputs in response to user input (or prompts). Generative AI models are designed to learn the patterns and structure of their input training data and generate new data with similar characteristics. Because generative AI tools can quickly and easily generate a wide variety of human-like outputs, they have the potential to radically transform the way we approach content creation across a wide range of domains and industries. However, because AI outputs are derived from undocumented data sources, infringe on intellectual property, and are prone to error, they are also subject to a number of important **limitations**.



### Limitations of AI

Despite their broad potential, generative AI models also have several important limitations. Understanding these limitations is critical for using these technologies ethically and effectively.

### Ethical Concerns

- **Bias and Fairness:** Generative AI models can learn biases present in the training data, producing outputs that reflect, reinforce, or amplify social prejudices and stereotypes.
- **Misinformation and Manipulation:** AI-generated content can be used to create convincing fake news, deepfakes, and other forms of misinformation, leading to potential manipulation and harm.
- **Plagiarism and Copyright:** The use of AI-generated content raises significant questions about authorship, intellectual property, and attribution, potentially leading to issues with plagiarism and copyright infringement.
- **Attribution and Accountability:** Determining responsibility for AI-generated content can be challenging, raising

### Frequently Asked Questions

What is artificial intelligence (AI)?

What is ChatGPT?

How can I use AI in my teaching, research, or coursework?

Is student use of AI considered a violation of academic integrity?

What are some ways instructors can address student misuse of AI?

What are the limitations of AI?

What is AI literacy?

Who owns the content generated by AI?

How do I cite AI-generated output?

GYIK



# Köszönöm a figyelmet – kérdések?

Fotók: MI felhasználásával (ai-suit-up)

